

InkTrak is a comprehensive solution which automates CIP3/CIP4 creation for CIP enabled presses and a functionally equivalent graphical ink coverage report for older presses without CIP capability.

InkTrak is a self contained workflow package with no reliance on external RIPs, Acrobat or any other utility. It works with user defined HotFolders, press parameters, and destination folders to create PPF files and user configurable PDF reports. It is easily integrated within existing workflows and production environments.

InkTrak supports several input formats including Composite CMYK TIFF (including spot colour separations in alpha channels), sets of screened 1Bit TIFFs, PDFs and CIP3 PPFs originating on external systems. There is no limit to the number of HotFolder workflows InkTrak can create and process with its priority ordered queues. This means InkTrak can be set up to automatically handle a variety of inputs from differing sources and output to multiple destinations. It is a highly productive system.

InkTrak also includes a feature allowing costing information to be setup for each ink colour which is then used to automatically generate ink and materials pricing on a per job basis.

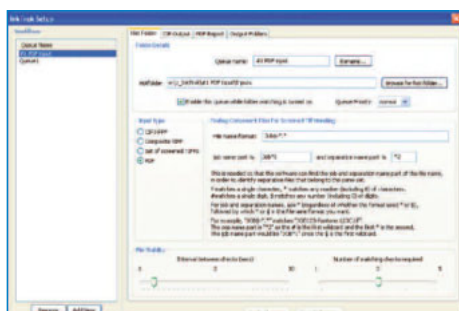
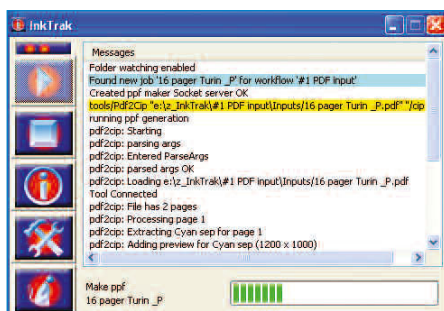
Since InkTrak supports composite TIFF files as input, this means that composite Proofing TIFFs with a typical resolution of 300dpi to 720dpi for hard copy proofing devices can now also be used to generate press setup information well in advance of the job being run out to plate.

For non CIP capable presses, InkTrak has compensation factors built in for each channel and key to handle press variations when generating PDF reports.

InkTrak also has a pre-flight capability and warning system for input PDF files. For example, if a PDF has elements defined in RGB colourspace or with attached profiles which would necessarily give varying results depending upon the output RIPs capabilities, InkTrak outputs a warning message in the PDF report, highlighting potential problems and inaccuracies. This function can be used as a pre-flight tool to ascertain potential problem areas and fix them at source.

InkTrak is a 'must have' tool for printers who require a cost effective CIP upgrade, reduce make-ready time on press, reduce ink and material wastage, and who want to streamline their production processes.

InkTrak creates PPF output and/or ink coverage reports from any standard PDF or 1Bit TIFF set of files destined for plate production. InkTrak is highly efficient, uses minimal resources and can be deployed on existing RIP and workflow computer systems. InkTrak can work in pre-RIP or pre-Plate mode since it consumes PDF or 1Bit TIFF data sets.



## ➤ Features and benefits

- Reduce press setup time
- Reduce media waste
- Reduce ink consumption
- Works from imposed digital files
  - faster processing
  - no need for plate scanning hardware
  - no risk of scratching plates
- Pre-flight capability and warning system for PDF input files
- Consistent results
- Create PPF (Print Production Format) files for CIP compliant presses
- Create easily configurable PDF ink coverage and costing reports
  - useful for management or non-CIP presses
  - simplifies manual ink duct control
- Can also generate PDF reports from externally created PPF files
- Easy to use and designed to work with any workflow and RIP systems
- Comprehensive package with multiple HotFolders and Destinations
- Simple configuration for all presses
- Provides Press-room with a visual PDF proof before the job is mounted for production
- Consistent report format for both PPF and non-PPF enabled presses
- RIP and Acrobat independent

### System requirements

**HW:** Intel Pentium 4+  
RAM 1GB+  
Disk 200GB+ depending upon input PDFs and 1Bit TIFFs

**OS:** W2K Professional, W2K Server, W2K3 Server, XP Professional, Vista



## ➤ Supported Inputs

- PDF files
- sets of 1 Bit Screened TIFFs
- Composite CMYK TIFFs (with spots in alpha channels)
- PPF files

## ➤ Supported Outputs

- PPF (Print Production Format)
- Configurable PDF reports
- thumbnails with separation lists
  - Ink coverage (summary and individual plates)
  - Management costings
  - Plate and page previews (with ink key boundaries)
  - PDF Pre-flight results

## ➤ Workflow features

- Easy to learn and use
- Hot Folder Automation with unlimited prioritised queues and destinations
- User-defined plate size and sheet positioning
- User-defined ink key widths on an individual basis (or global setting for rapid entry)
- Scaling compensation for each colour and key
- User adjustable PPF image resolution with compression option
- Concise single PDF report for multi-page PDF documents and screened 1Bit TIFF sets
- For press room use, the report includes composite image previews for easy finished page identification, together with separation previews with channel information for each plate

### OmniTek Systems Ltd

Miller House  
Rosslyn Crescent  
Harrow  
Middlesex  
HA1 2RZ  
T +44 (0)20 8933 7765  
F +44 (0)20 8205 4130  
[www.omnitek.co.uk](http://www.omnitek.co.uk)



**OmniTEK**  
The Solutions Engineering Company